

Molecular Lumberyard

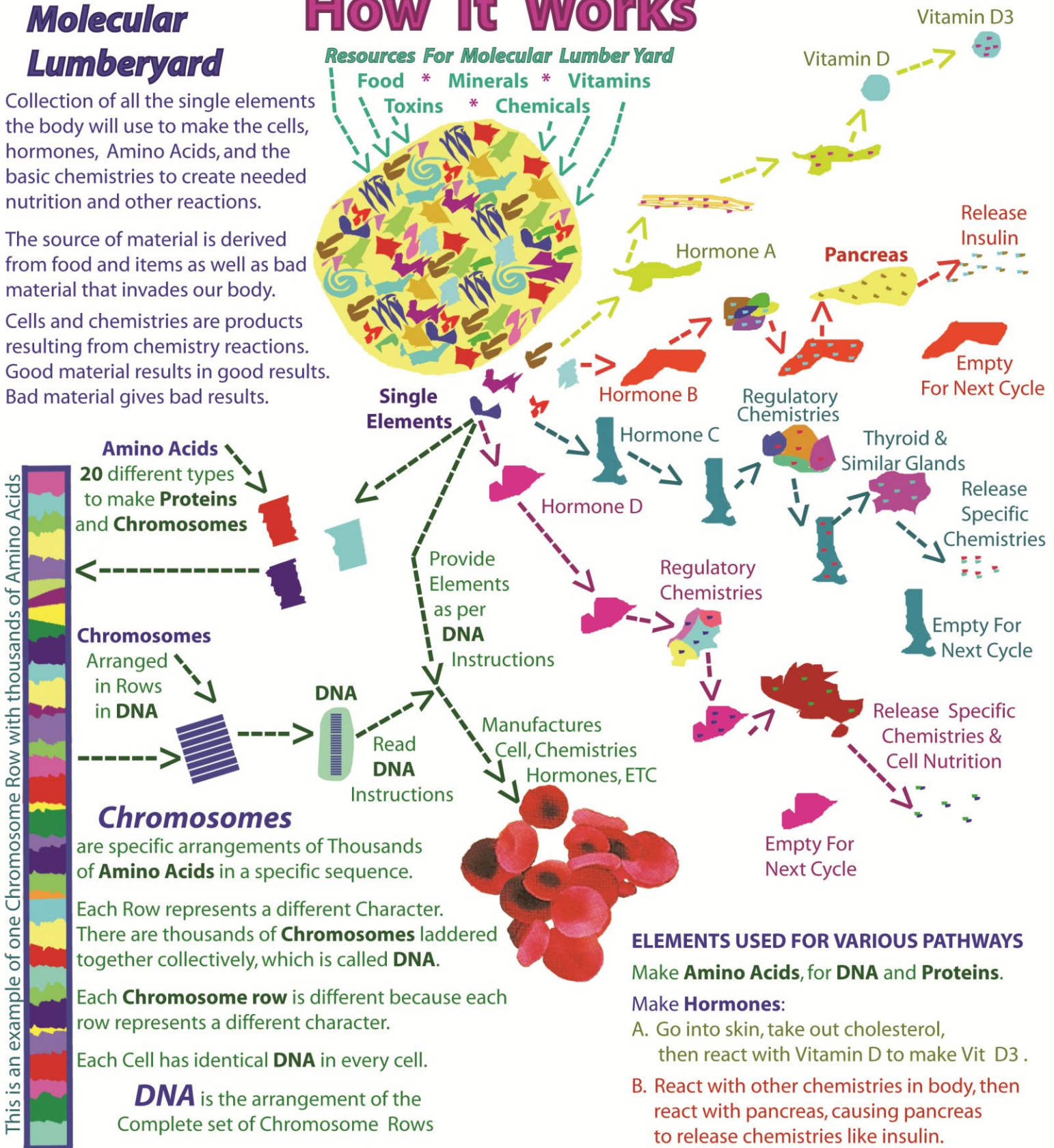
Collection of all the single elements the body will use to make the cells, hormones, Amino Acids, and the basic chemistries to create needed nutrition and other reactions.

The source of material is derived from food and items as well as bad material that invades our body.

Cells and chemistries are products resulting from chemistry reactions. Good material results in good results. Bad material gives bad results.

How It Works

Resources For Molecular Lumber Yard



ELEMENTS USED FOR VARIOUS PATHWAYS

Make **Amino Acids**, for **DNA** and **Proteins**.

Make **Hormones**:

- Go into skin, take out cholesterol, then react with Vitamin D to make Vit D3.
- React with other chemistries in body, then react with pancreas, causing pancreas to release chemistries like insulin.
- React with other chemistries in body, then react with Thyroid and similar glands to cause them to release related chemistries
- React with various regulatory chemistries, which causes specific reactions to cause specific release of chemistry including cell nutrition.

Deficiency Effects

The body reads the incorrect **DNA** instructions to manufacture in a mass production manner based on those incorrect instructions & the **Molecular Lumberyard's** availability to supply those instructions.

Deficient Resources For Molecular Lumber Yard
Bad Food * Low Minerals * Low Vitamins

Toxins * **Chemicals**

Minimal amount of Vitamin D3

Vitamin D  Weak reaction

Weak Hormone only
takes 3 Cholesterol
instead of 5

Leaves excess Chol in skin.
Cholesterol builds up causing
high cholesterol levels.

A diagram of a liver with several arrows pointing outwards, representing the removal of cholesterol from the body. One arrow points upwards towards the text 'Leaves excess Chol in skin.' and another points towards the text 'Cholesterol builds up causing high cholesterol levels.'

Hormone A
Incorrectly made

Incorrect Message to Pancr

Incorrect interpretation
causes incorrect
release of Insulin.

high sugar levels
Diabetes

Empty
For Next Cycle

Single -- Elements

Missing Hormone B incorrectly made

Hormone C
Incorrectly made

Regulatory
Chemistries

Thyroid & Similar Glands

Incorrect Release of Chemistries

Empty For
Next Cycle

Incorrect Elements as per Incorrect DNA

Instructions

DNA

Read
Incorrect
DNA
Instructions

Manufactures
Incorrect
Cells, Chemistries
Hormones, ETC

Incorrect Cell

Incorrect Cell

IME

Incorrect Cell

IME

Incorrect Cell

IME

Incorrect Cell

IME

Incorrect Cell

IME

Proteins,

Proteins, Amino Acids, DNA & Basic Chemistry

DEPLETED OR MISSING ELEMENTS
CAUSE INCORRECT REACTIONS
LEADING TO WRONG PATHWAYS

Incorrect **Hormones** - Wrong reactions & poor communication:

- A. Goes into skin, takes minimal cholesterol due to the incorrect interpretation, poorly reacts with Vit. D to make weak Vit D3.
- B. Statin drugs given to reduce Cholesterol instead of correcting cause.

B. Incorrect communication causes incorrect interpretation by the pancreas, causing pancreas to release incorrect amounts of chemistries like insulin and major digestive enzymes.

C. Similar to pancreas, incorrect biochemistry communication causes incorrect interpretation by the Thyroid & similar glands to cause them to release incorrect amounts of chemistries.

D. Similar to above, incorrect biochemistry communication with various regulatory chemistries leads to incorrect reactions to cause incorrect release of chemistry/cell nutrition.

Molecular Lumberyard

Chemical Effects

Chemo or Radiation Effects on the Molecular Lumber Yard
Bad Food * Low Minerals * Low Vitamins

The unnatural chemistry of Chemo and radiation damages some existing chemistry, which changes the available collection of all the single Key elements, causing a more severe deficiency. It is now missing more of the needed materials to properly create correct hormones, Amino Acids, chemistries.

The material source now consists of incorrect chemistries due to treatments in addition to the previous missing material

Incorrect Cells and Chemistries result from incorrect chemistry reactions.

DCR = Damaged from Chemo or Radiation

IME = Initial Missing Chemistry

More **Amino Acids** made incorrectly due to incorrect available material.

Chromosomes

Black & Green area shows changed chemistry of Amino Acid in the DNA

BLACK and GREEN indicates incorrect Chromosome due to the deficiencies causing incorrect amino acid production, altering all domino effects and production.

Chromosomes

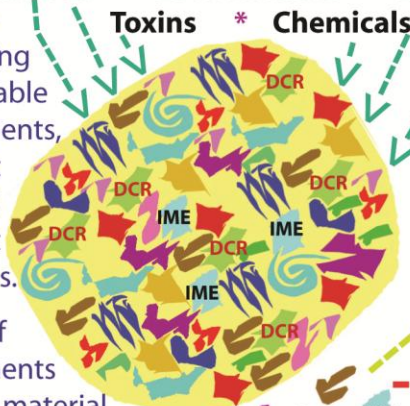
Because some **Amino Acids** were made incorrectly, the **Chromosomes** were not properly representing the genetic character.

Incorrect information replaces the correct information, causes incorrect communication.

DNA gives the manufacturing instructions to manufacture the cells, **Amino Acids**,

Hormones and basic chemistries. Incorrect chemistry causes changes in the **DNA** structure, changes which create incorrect instructions and interpretation.

The body reads the incorrect **DNA** instructions to manufacture in a mass production manner based on those incorrect instructions & the **Molecular Lumberyard's** availability to supply those instructions.



Weaker Hormone only takes 2 Cholesterol instead of 5

Extreme Minimal amount of Vitamin D3

Vitamin D Very Weak reaction Leaves excess Chol in skin. Cholesterol builds up causing high cholesterol levels.

Hormone A Incorrectly made More Severely

Incorrect Message to Pancreas

Incorrect interpretation causes incorrect release of Insulin.

high sugar levels Diabetes

Empty For Recycle

Hormone B Severely Incorrect

Hormone C Incorrectly made More Severely

Hormone D incorrectly made More Severely

Incorrect Regulatory Chemistries

Severely Incorrect Interpretations Wrong Reactions

Incorrect Release of Specific Chemistries and Cell Nutrition

Empty For Next Cycle

Minimal Results and Incorrect Chemistries

CHMO, RADIATION, OTHER DRUGS ADDING ADDITIONAL CHANGES TO THE PREVIOUS DEPLETED OR MISSING ELEMENTS CAUSE MORE SEVERE INCORRECT REACTIONS DEVIATING PATHWAYS FURTHER FROM NORMAL

Proteins, Amino Acids, DNA & Basic Chemistry Severely Deviated

Severely Incorrect **Hormones** - Severely Wrong reactions:

- Goes into skin, takes almost no cholesterol due to damaged interpretation, very poor reaction with Vit. D making Vit D3. Further treatments to reduce Chol causes further decline.
- Impaired communication = Severely incorrect interpretation by pancreas, causing pancreas to release very low amounts of chemistries like insulin and major digestive enzymes.
- Similar to pancreas, the Thyroid & similar glands release little.
- Similar to above, the various regulatory chemistries, leads to Severely incorrect release of chemistry and cell nutrition.

Molecular Lumberyard

Multi-Chemical Effects

Multiple Chemo or Radiation Effects on the Molecular Lumber Yard

Bad Food * Low Minerals * Low Vitamins

Each additional unnatural chemistry of Chemo and radiation increases the damage, reducing the available supply of all the single Key elements. The body will compromise and use similar but incorrect materials to manufacture hormones, Amino Acids, chemistries.

The increased reduction in the source of correct material increases incorrect chemistry production due to additional treatments resulting in increased incorrect Cells and Chemistries.

DCR = Damaged from 1st Chemo or Radiation
DAC = Damaged from 2nd Chemo/ Radiation

IME = Initial Missing Chemistry

More **Amino Acids** made incorrectly due to incorrect available material.

Chromosomes Black, Green & Purple shows changed chemistry of Amino Acid in the **DNA**

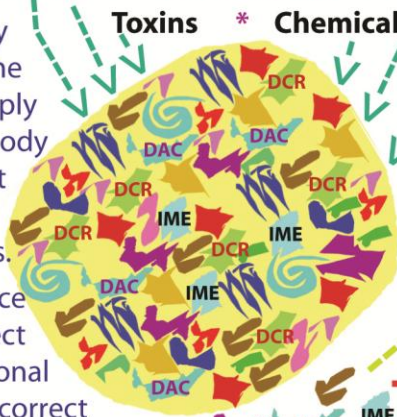
BLACK, GREEN and Purple indicates incorrect Chromosomes due to the deficiencies causing incorrect amino acid production, altering all domino effects & productions.

Chromosomes

Additional treatments cause more **Amino Acids** to be made incorrectly, the **Chromosomes** further Divate from proper representation of the genetic character. This causes further incorrect information and communication.

The severely incorrect **DNA** gives severely incorrect manufacturing instructions to make the cells, **Amino Acids, Hormones** and basic chemistries, causes more changes in **DNA** structure, creates incorrect instructions and interpretation.

The body manufactures in a mass production manner based on those incorrect instructions & the **Molecular Lumberyard's** availability to supply material to satisfy those incorrect instructions.



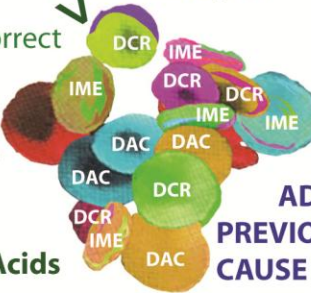
Single Elements

Provide Elements as per **Incorrect DNA**



DNA Read Incorrect **DNA** Instructions

Manufactures **Incorrect Cells, Chemistries Hormones, ETC**



Extremely weak Hormone only takes 1 Cholesterol instead of 5

Hormone A Incorrectly made

Vitamin D

Extreme Minimal amount of Vitamin D3

This weak reaction Leaves alot of excess Chol in skin. Cholesterol builds up to causing extremely high cholesterol levels.

Incorrect Message to **Pancreas**

Incorrect interpretation causes incorrect release of Insulin.

VERY HIGH Sugar levels - Diabetes

Empty For Next Cycle

Hormone B Severely Incorrect

Hormone C Incorrectly made More Severely

Hormone D incorrectly made More Severely

Incorrect Regulatory Chemistries

Severely Incorrect Interpretations Wrong Reactions

Incorrect Release of Specific Chemistries and Cell Nutrition

Empty For Next Cycle

CHEMO, RADIATION, OTHER DRUGS ADDING ADDITIONAL CHANGES TO THE PREVIOUS DEPLETED OR MISSING ELEMENTS CAUSE MORE SEVERE INCORRECT REACTIONS DEVIATING PATHWAYS FURTHER FROM NORMAL

Each Additional treatment of Chemo/ Rad/ drugs will increase Severity of Protein/Amino Acid/DNA/Basic Chemistry Deviation

Severely Incorrect **Hormones** - Severely Incorrect reactions:

- Goes into skin, takes almost no cholesterol due to damaged interpretation, very poor reaction with Vit. D making Vit D3. Further treatments to reduce Chol causes further decline.
- Impaired communication = Severely incorrect interpretation by pancreas, causing pancreas to release very low amounts of chemistries like insulin and major digestive enzymes.
- Similar to pancreas, the Thyroid & similar glands release little.
- Similar to above, the various regulatory chemistries, leads to Severely incorrect release of chemistry and cell nutrition.